

SCRATCH 5 SPECIFICATIONS

PERFORMANCE CAPACITIES

FEATURE	RANGE	ACCURACY & CAPACITY
Velocity	1 - 400mm/s	0.25mm/s
Normal Load	+/-225N, +/-750N	0.5N, 3N; 1000 sps
Tangential Load	+/-225N, +/-750N	0.5N, 3N; 1000 sps
Lateral Displacement	300mm	0.25mm
Depth	+/-2.5mm	12.5µm

WORKING ENVELOPE

ORIENTATION	RANGE	NOTE
Lateral	300mm	200mm working space
Vertical	50mm	
Work Surface	150mm x 300mm	¼-20 mounting holes on 1" grid
Lateral Displacement	300mm	0.25mm

STANDARDS & TEST CAPABILITIES

STANDARD OR TEST	NOTES
ASTM D7027-05	Meets and exceeds
ISO 19252:2008	Meets and exceeds both formats
ISO 19252:2013	Meets and exceeds both formats
Ford 5 Finger	Multiple constant-load
Erichsen Crosshatch	Manual turntable accessory available
ASTM D3363	Replication by constant-load analysis
Toyota TSL3618G 4.9 & Others	Per ASTM
Scratch Coefficient of Friction	Per ASTM and ISO
Reciprocation	Up to 1Hz
Puncture	Thin film non-conductive puncture detection
Indentation	Up to 200N @1mm/s
Automotive Mar Analysis	

OUTPUT

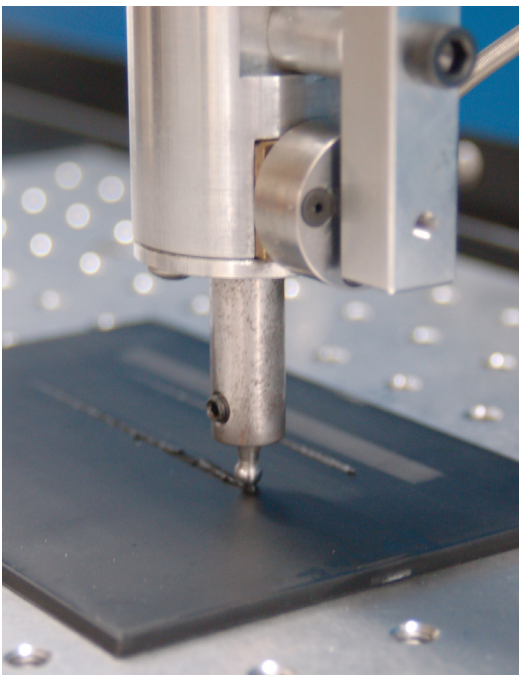
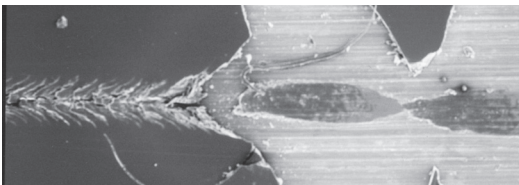
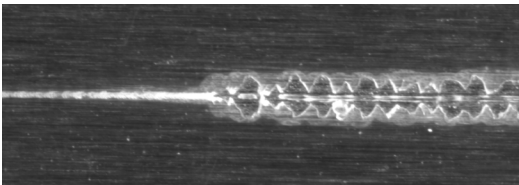
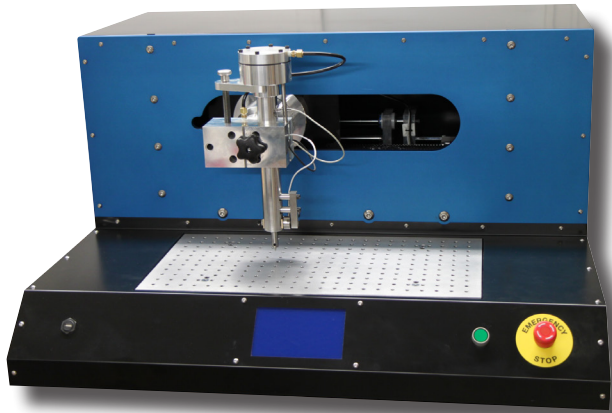
- CSV format, all analog sensors + scratch coefficient of friction

STYLI CHUCK

- ASTM/ISO standard for 0.095" shank

SOFTWARE

- Real-time diagnostics
- Heads-Up Data Display with temporal comparisons
- Export to SVA Software



CONTACT INFORMATION:

(888) 512-5633
+1 (713) 234-0026 (International)

Noah Smith, COO
Surface Machine Systems, LLC
1320 Arrow Point Dr, Suite 501 #TW55
Cedar Park, TX 78613

inquiries@surfacemachines.com

