



SCRATCH 3.5 SPECIFICATIONS

PERFORMANCE CAPACITIES

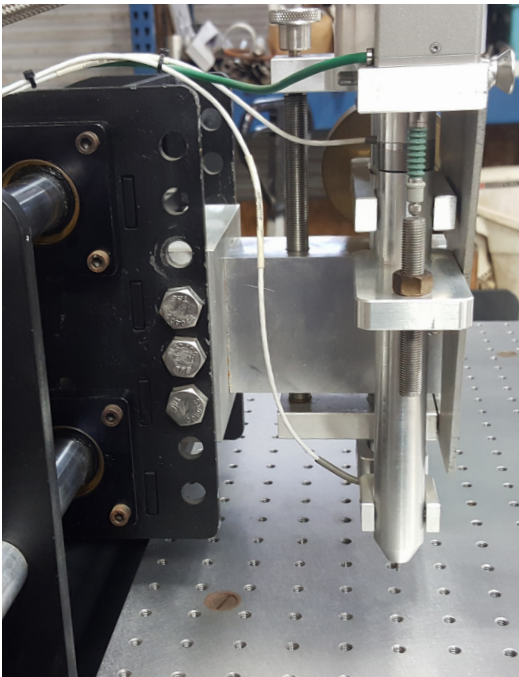
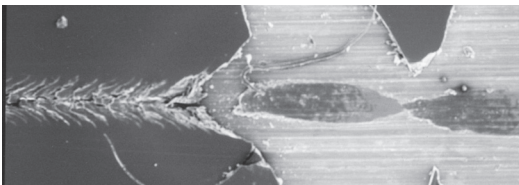
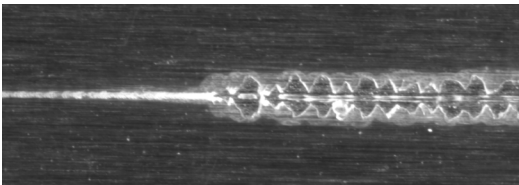
FEATURE	RANGE	ACCURACY & CAPACITY
Velocity	1 - 400mm/s	0.25mm/s
Normal Load	+/-225N	0.5N; 1000 sps
Tangential Load	+/-225N	0.5N; 1000 sps
Lateral Displacement	300mm	0.25mm

WORKING ENVELOPE

ORIENTATION	RANGE	NOTE
Lateral	300mm	200mm working space
Vertical	50mm	
Work Surface	150mm x 300mm	¼-20 mounting holes on 1" grid
Lateral Displacement	300mm	0.25mm

STANDARDS & TEST CAPABILITIES

STANDARD OR TEST	NOTES
ASTM D7027-05	Meets and exceeds
ISO 19252:2008	Meets and exceeds both formats
ISO 19252:2013	Meets and exceeds both formats
Ford 5 Finger	Multiple constant-load
Erichsen Crosshatch	Manual turntable accessory available
ASTM D3363	Replication by constant-load analysis
Toyota TSL3618G 4.9 & Others	Per ASTM
Scratch Coefficient of Friction	Per ASTM and ISO
Automotive Mar Analysis	



OUTPUT

- CSV format, all analog sensors + scratch coefficient of friction

STYLI CHUCK

- ASTM/ISO standard for 0.095" shank

OPTIONS

- Integrated work stand

**SURFACE
MACHINE
SYSTEMS**

CONTACT INFORMATION:

(888) 512-5633
+1 (713) 234-0026 (International)

Noah Smith, COO
Surface Machine Systems, LLC
1320 Arrow Point Dr, Suite 501 #TW55
Cedar Park, TX 78613

inquiries@surfacemachines.com